



Lacom Hot Melt Carpet Back coating line

Speed from 2—15 m/min
Application weight from 200—800 g/m²

For tufted, woven, needle-felt and grass carpet



EVA hot melt pellets filled with about 30% chalk (delivered in 800 kg big-bags)



View of complete line including shearing, inspection and roll-up



Lacom unit, accumulator for carpet and secondary backing



Pellet melting unit with heated holding tank. In front the oil heater.



Carpet outlet and storage space on top of the backing line



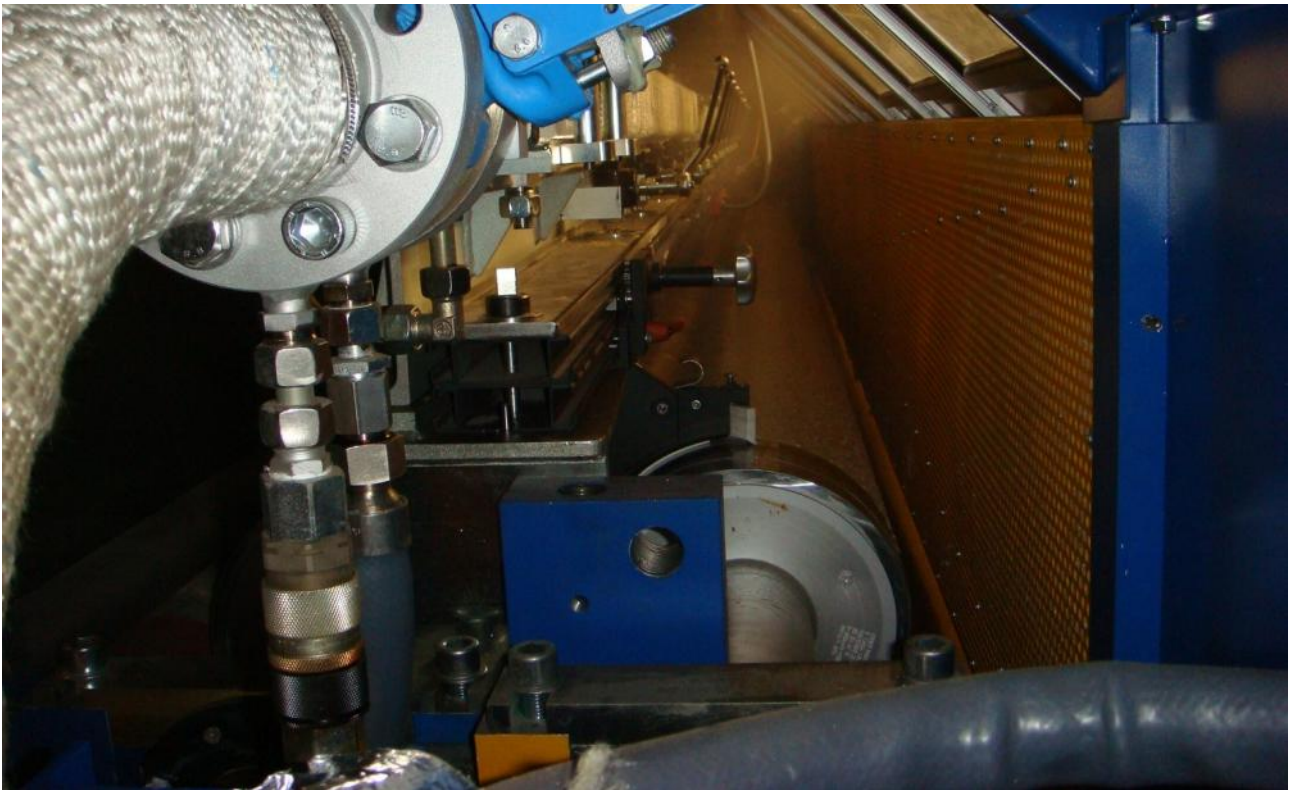
Transfer roller in service and cleaning position



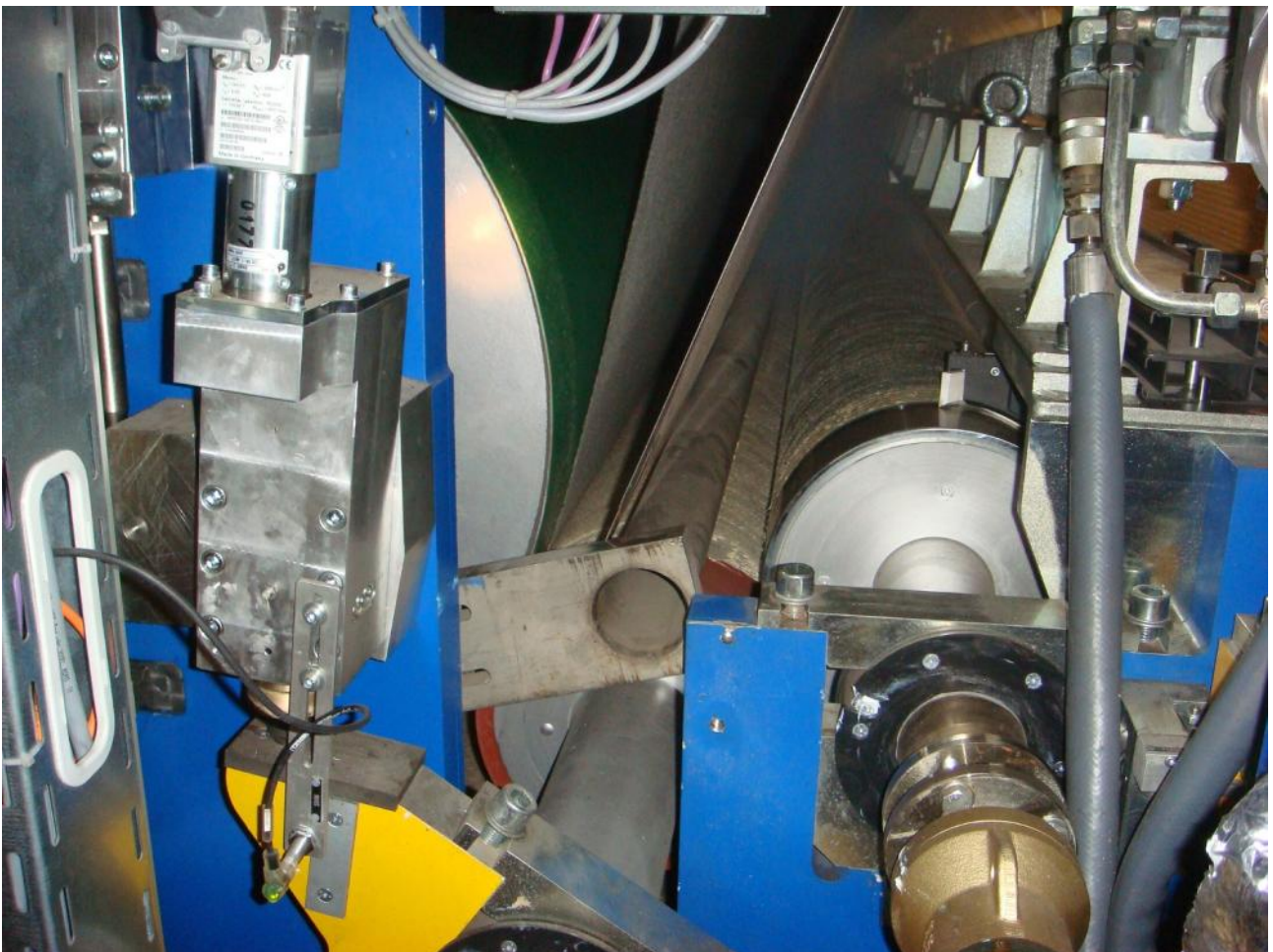
Control unit with temperature control



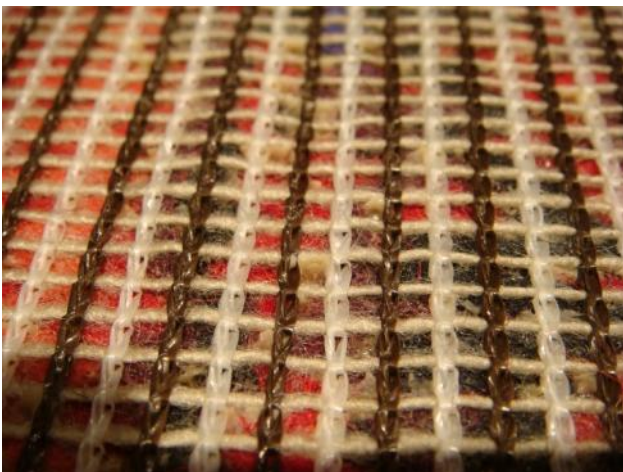
Touch screen for line control



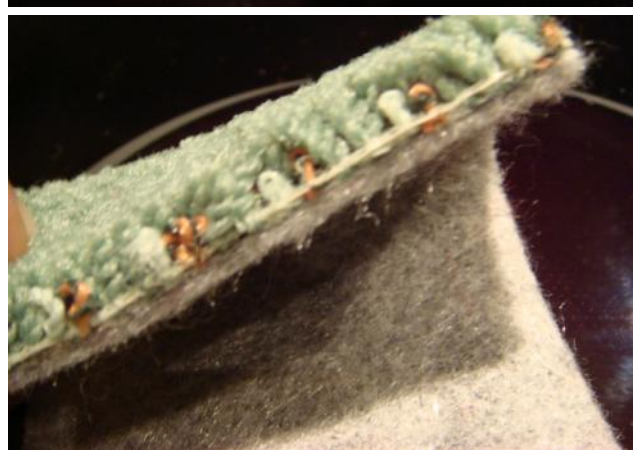
Details of the laminating unit with hotmelt dispenser, application roller and cooling roller (green)



LACOM— MRC Hotmelt
Carpet backing, coating and laminating line



- About 70% less space requirement
- No latex preparation needed
- Better tuft-lock and binding of secondary backing
- About 80% energy saving
- Application weight between 200—800 g/m²
- No waste water
- No exhaust
- Environmental friendly



LACOM— MRC Hotmelt
Carpet backing, coating and laminating line